

尖底 S/B SHARP BACK

S01 衛星石尖底
SATELLITE S/B (m/m)



S21 番石尖底
IMITATED S/B (m/m)



S40 水滴尖底
DROP S/B (m/m)



S50 桃心尖底
HEART S/B (m/m)



S90 橢圓尖底
OVAL S/B (m/m)



S181 四方衛星石切角尖底
SQUARE S-CUT S/B (m/m)



S70 正方形尖底
SQUARE S/B (m/m)



S82 長八角尖底
OCTAGON S/B (m/m)



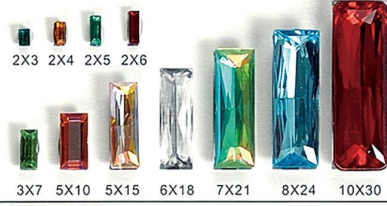
S192 梅花尖底
FLOWER S/B (m/m)



S60 馬眼尖底
HORSE EYE S/B (m/m)



S68 T型尖底
T-SHAPE S/B (m/m)



S580 三角形尖底
TRIANGLE S/B (m/m)



S590 長方形尖底
RECTANGLE S/B (m/m)

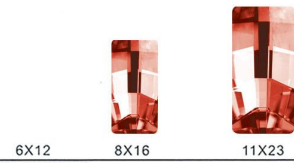


S370 勳章尖底
BADGE S/B (m/m)

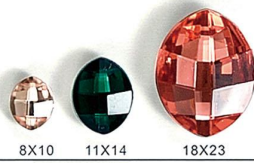


雙面 2-SIDE

D385 長條雙面
STRIP 2-SIDE (m/m)



D360 樹葉雙面
LEAF 2-SIDE (m/m)



D390 S型雙面
S-SHAPE 2-SIDE (m/m)



D350 不規則菱形雙面
IRREGULAR DIAMOND 2-SIDE (m/m)



D365 橄欖雙面
OLIVE 2-SIDE (m/m)



D395 橢圓雙面
OVAL 2-SIDE (m/m)



D400 不規則桃心雙面
IRREGULAR HEART 2-SIDE (m/m)

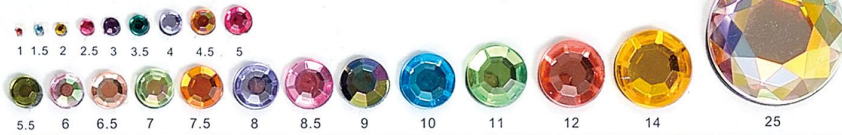


半平角 F/C, F/B FACETED CUTTING, FLAT BACK

F400 圓形平角(尖頂)
ROUND F/C, F/B, P/T (Pointed Top) (m/m)



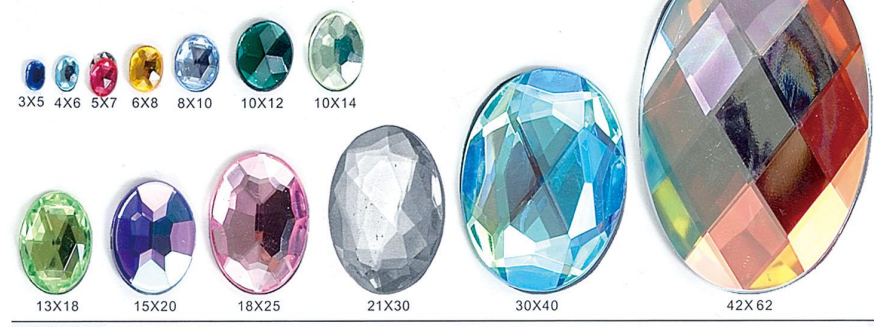
F100 圓形平角平
ROUND F/C, F/B (m/m)



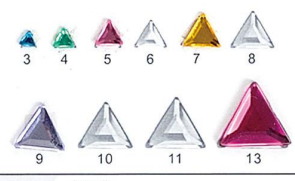
F300 菱形平角
DIAMOND F/C, F/B (m/m)



F121 橢圓平角
OVAL F/C, F/B (m/m)



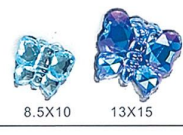
F290 三角型平角
TRIANGLE F/C, F/B (m/m)



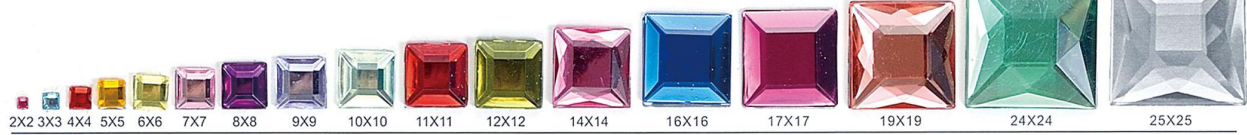
F280 五角星平角
STAR F/C, F/B (m/m)



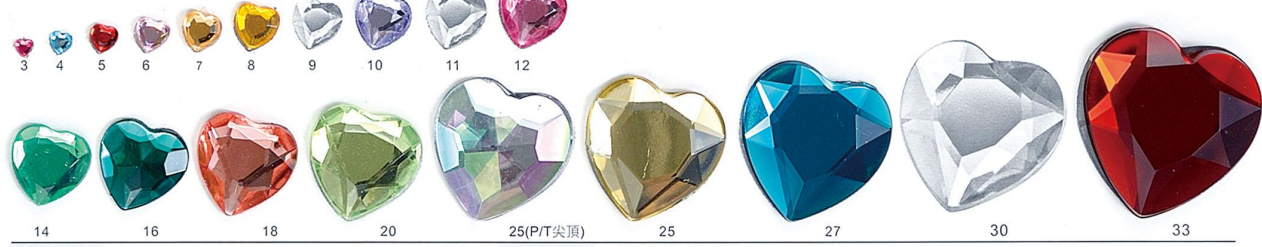
F512 蝴蝶
BUTTERFLY F/C, F/B (m/m)



F130 正方形平角
SQUARE F/C, F/B (m/m)



F150 桃心平角
HEART F/C, F/B (m/m)



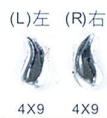
F170 馬眼平角
HORSE EYE F/C, F/B (m/m)



F69 T型平角
T-SHAPE F/C, F/B (m/m)



F331
變形蟲
AMEBA F/C, F/B (m/m)



F330
八角星
8-ANGEL STAR F/B(m/m)



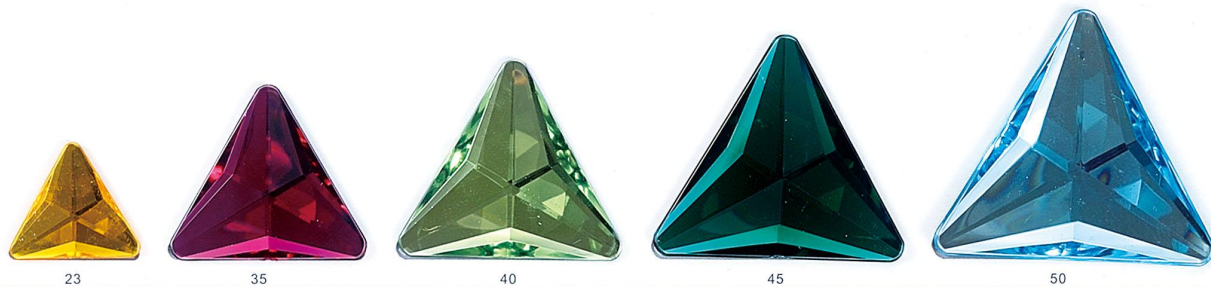
F508
花葉半平角
FLOWER SERIES F/C, F/B(m/m)



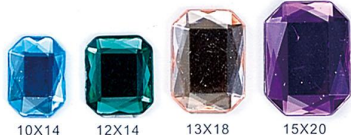
F310 五瓣花平角
5-PETAL FLOWER F/C, F/B(m/m)



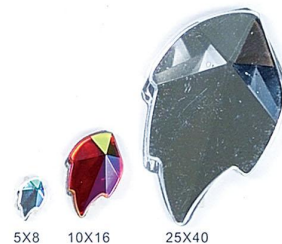
F497 三角形平底尖頂
TRIANGLE F/B, P/T(Pointed Top) (m/m)



F141 長八角
OCTAGON F/C, F/B(m/m)



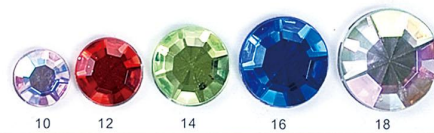
F570 楓葉平角
LEAF F/B(m/m)



F161 水滴平角
DROP F/C, F/B(m/m)



F340 圓平角閃底
ROUND F/B, FLASH CUT, (m/m)



F501
月亮平角
MOON F/C, F/B(m/m)

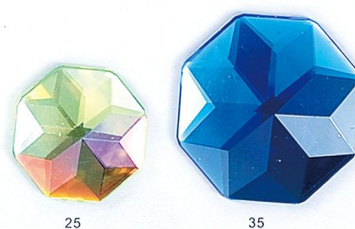


F375 衛星平底
SATELLITE F/B (m/m)

F346 不規則菱形平底
IRREGULAR DIAMOND F/B (m/m)



F355 正八角平底
REGULAR OCTAGON F/B (m/m)



半球 HALF

H201 圓形半球
ROUND HALF (m/m)



H251 水滴半球
DROP HALF (m/m)



H220 橢圓半球
OVAL HALF (m/m)



H332 長八角半球
OCTAGON HALF (m/m)



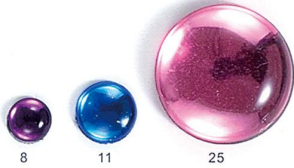
H241 桃心半球
HEART HALF (m/m)



H271 馬眼半球
HORSE EYE HALF (m/m)



H320 圓形半球低面
ROUND HALF LOWER (m/m)



鏡面 MIRROR

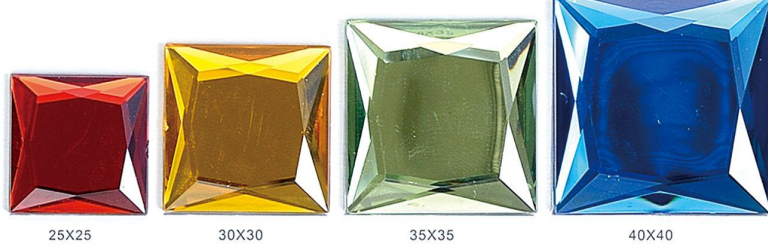
M700 圓形鏡面
ROUND MIRROR (m/m)



M730 長方鏡面
RECTANGLE MIRROR (m/m)



M710 正方形鏡面
SQUARE MIRROR (m/m)



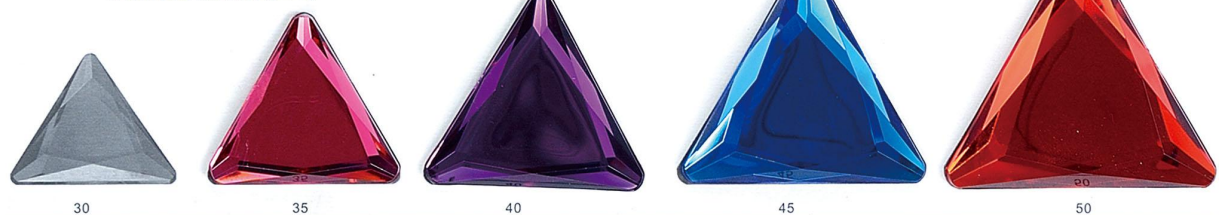
M720 圓形五角鏡面
5-POINTED ROUND MIRROR (m/m)



M722 橢圓鏡面
OVAL MIRROR (m/m)

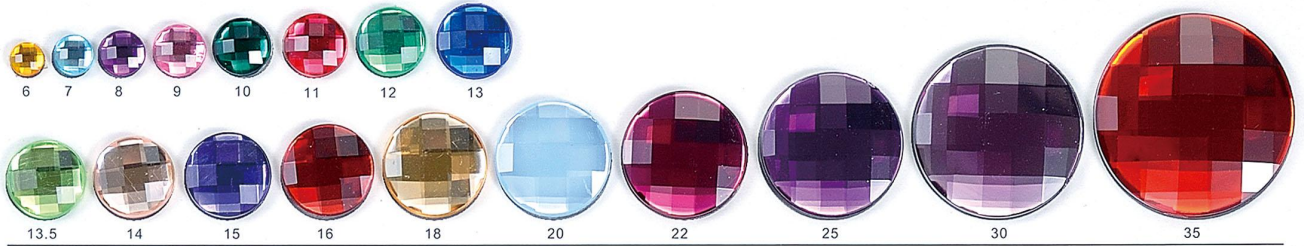


M740 三角形鏡面
TRIANGLE MIRROR (m/m)

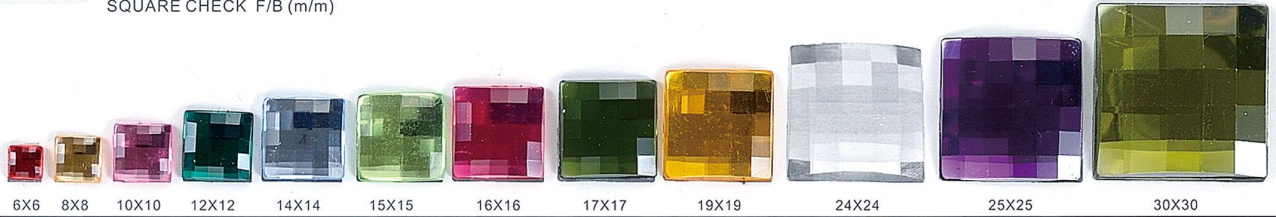


格面 CHECK

C500 圓形格面
ROUND CHECK F/B (m/m)



C540 正方格面
SQUARE CHECK F/B (m/m)



C530 桃心格面
HEART CHECK F/B (m/m)



C510 長方格面
RECTANGLE CHECK F/B (m/m)

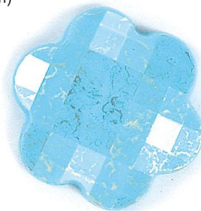


30X42

C380 花格面
5 PETAL FLOWER CHECK (m/m)



23



35

S550 圓形尖底格面
ROUND CHECK S/B (m/m)



15

S520 桃心尖底格面
HEART CHECK S/B (m/m)



16

18

20

22

25

27

中孔 1 HOLE

T800 中孔圓形平角平
1 HOLE, ROUND F/B (m/m)



5

6

7

8

9

T810 中孔梅花雙面
1 HOLE, FLOWER 2-SIDE (m/m)



6

7

8

10

12

14

T820 中孔正方形雙面
1 HOLE, SQUARE 2-SIDE (m/m)



6X6

7X7

8X8

T830 中孔三角形雙面
1 HOLE, TRIANGLE 2-SIDE (m/m)



7

9

中孔 桃心雙面

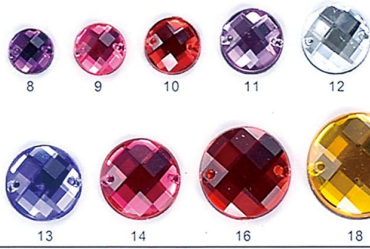


6

8

2洞 2 HOLE

T600 2洞圓格面
2 HOLE, ROUND CHECK F/B(m/m)



8 9 10 11 12

13 14 16 18 20 22 25 30 35

T620 2洞長八平角
2 HOLE, OCTAGON F/C,F/B(m/m)



6X8 8X10 10X12 10X14 13X18 15X20 18X25 30X40

T630 2洞衛星平底
2 HOLE, SATELLITE F/B(m/m)



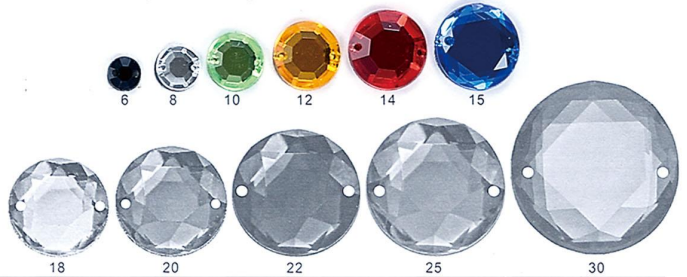
8 10 12 14 16 18

T640 2洞橢圓平角
2 HOLE, OVAL F/C,F/B(m/m)



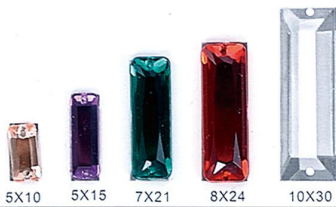
6X8 8X10 10X12 10X14 13X18 15X20 18X25 21X30 30X40

T650 2洞圓形平角
2 HOLE, ROUND F/C,F/B(m/m)



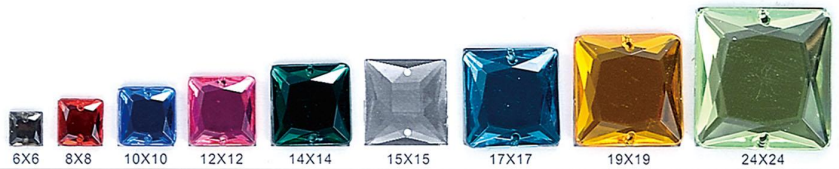
6 8 10 12 14 15 18 20 22 25 30

T660 2洞T型平角
2 HOLE, T-SHAPE F/C,F/B(m/m)



5X10 5X15 7X21 8X24 10X30

T670 2洞正方形平角
2 HOLE, SQUARE F/C,F/B(m/m)



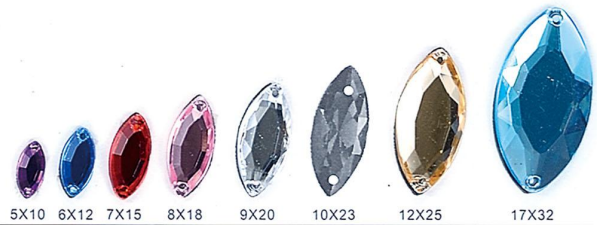
6X6 8X8 10X10 12X12 14X14 15X15 17X17 19X19 24X24

T680 2洞水滴平角
2 HOLE, DROP F/C,F/B(m/m)



6X10 8X13 10X14 13X18 15X20 18X25 20X30

T690 2洞馬眼平角
2 HOLE, HORSE EYE F/C,F/B(m/m)



5X10 6X12 7X15 8X18 9X20 10X23 12X25 17X32

T615 2洞不規則菱形
2 HOLE, IRRELVLAR DIAMOND(mm)



16X20

T666 2洞正八角平角
2 HOLE, REGULAR OCTAGON F/B(mm)



10 12 14 16